



Vẽ kim giờ và kim phút trên đồng hồ để nó đại diện cho thời gian được hiển thị.

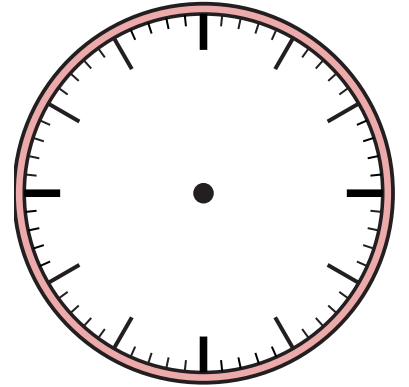
1) 2:56



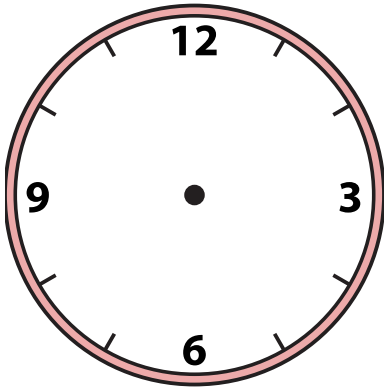
2) 2:20



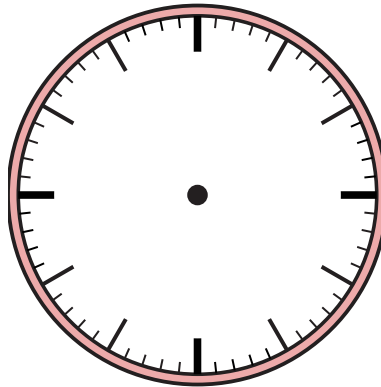
3) 8:01



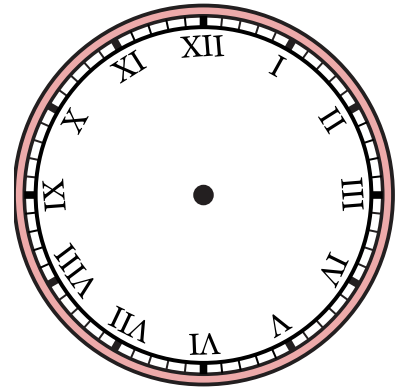
4) 4:27



5) 10:52



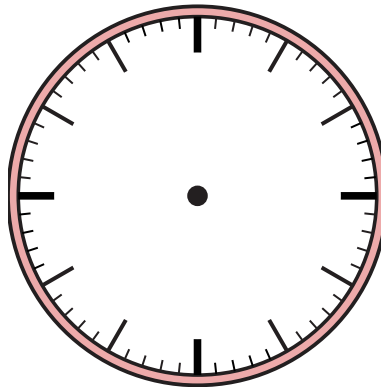
6) 11:24



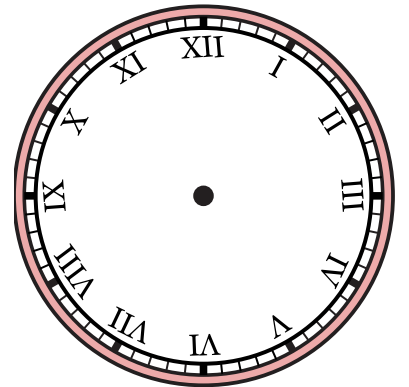
7) 4:22



8) 5:44



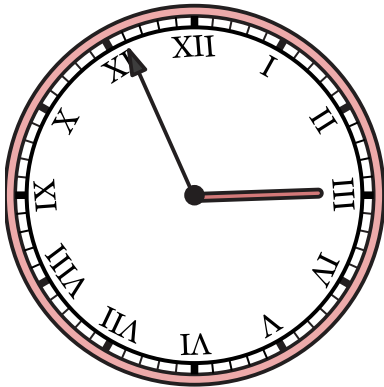
9) 12:25



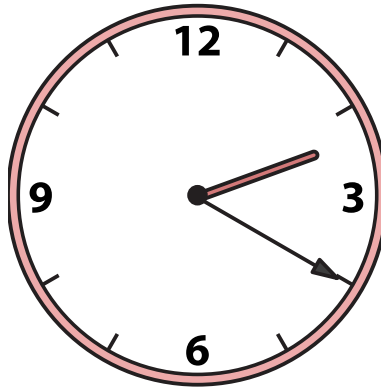


Vẽ kim giờ và kim phút trên đồng hồ để nó đại diện cho thời gian được hiển thị.

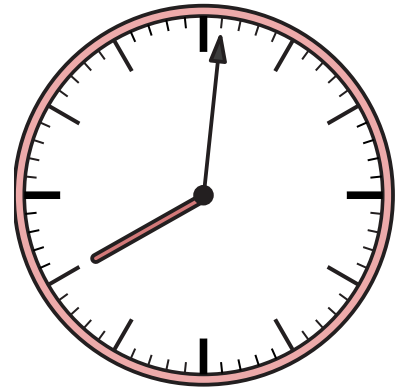
1) 2:56



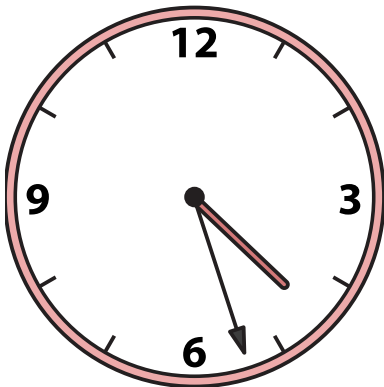
2) 2:20



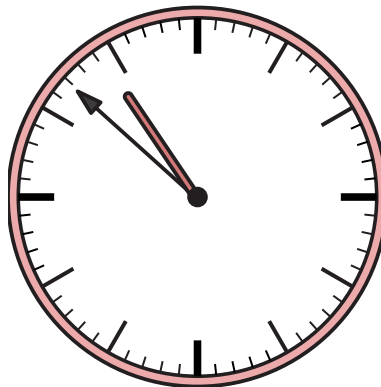
3) 8:01



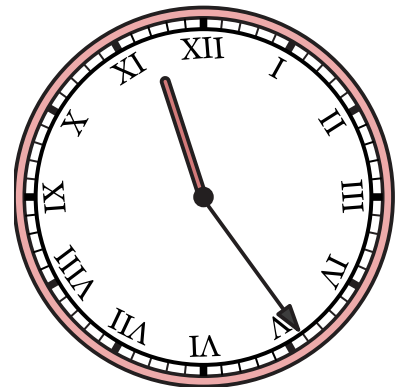
4) 4:27



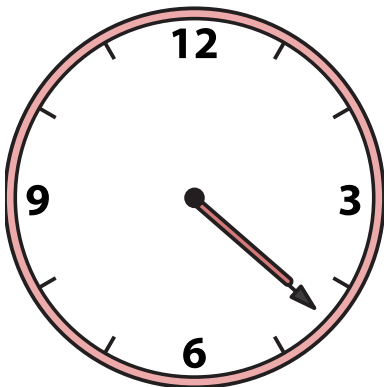
5) 10:52



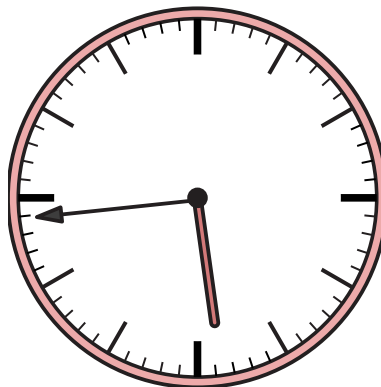
6) 11:24



7) 4:22



8) 5:44



9) 12:25

