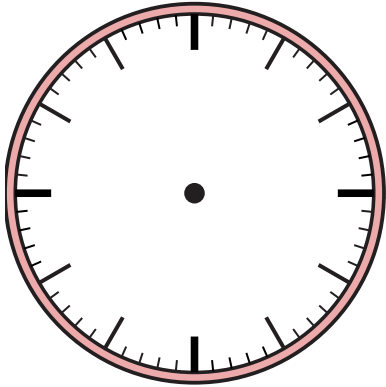




Vẽ kim giờ và kim phút trên đồng hồ để nó đại diện cho thời gian được hiển thị.

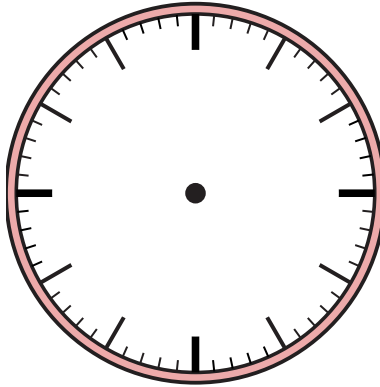
1)

11:55



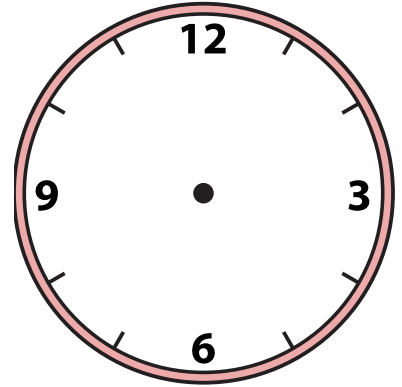
2)

7:15



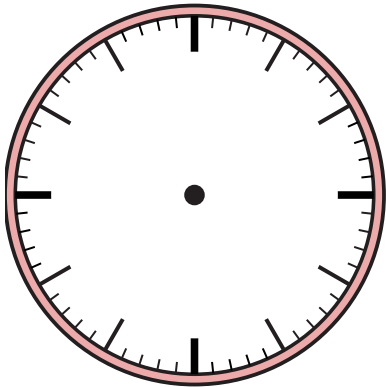
3)

8:15



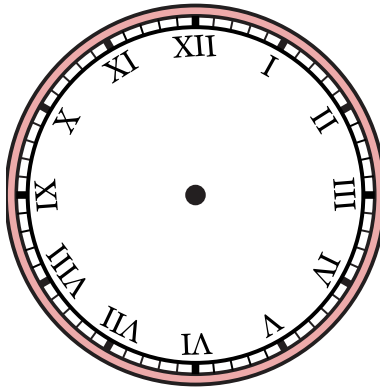
4)

10:17



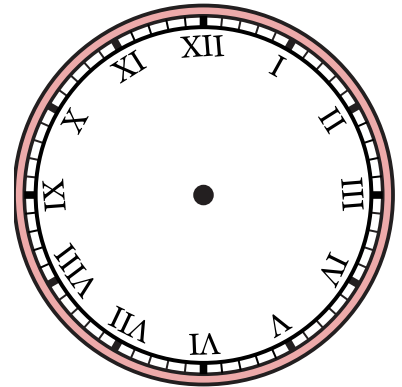
5)

8:29



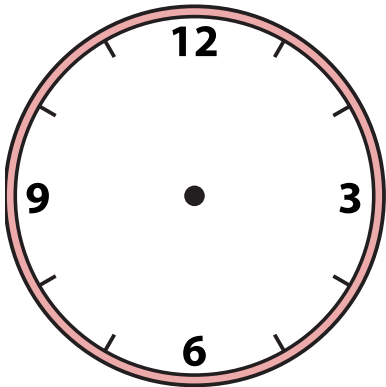
6)

2:09



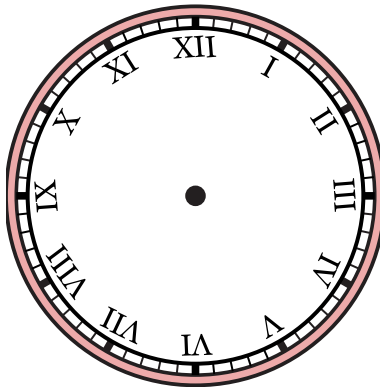
7)

12:43



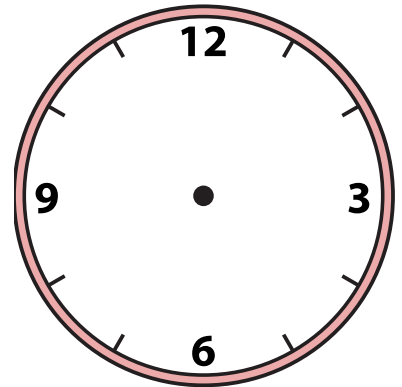
8)

4:16



9)

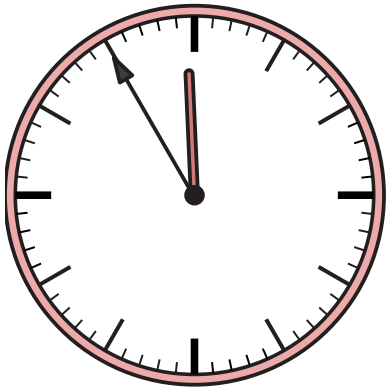
12:50



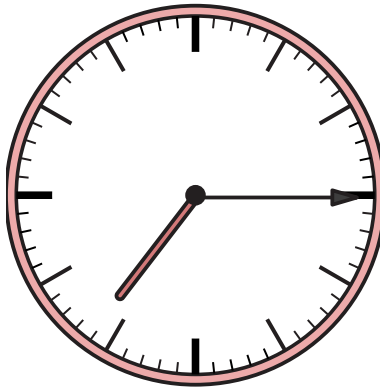


Vẽ kim giờ và kim phút trên đồng hồ để nó đại diện cho thời gian được hiển thị.

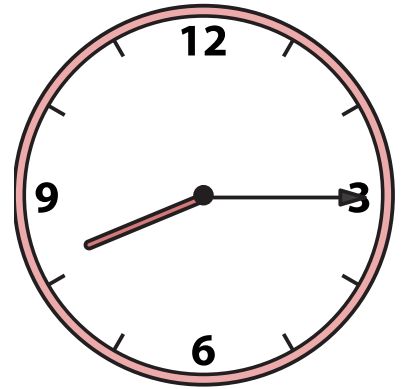
1) 11:55



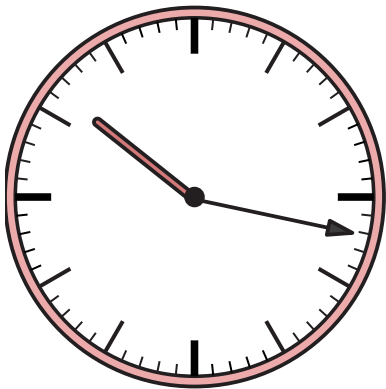
2) 7:15



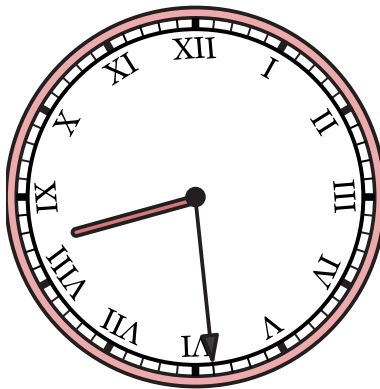
3) 8:15



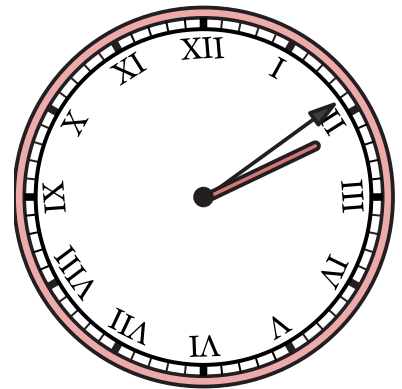
4) 10:17



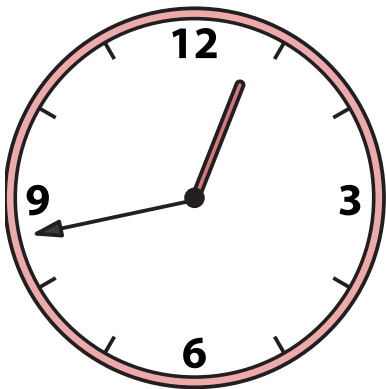
5) 8:29



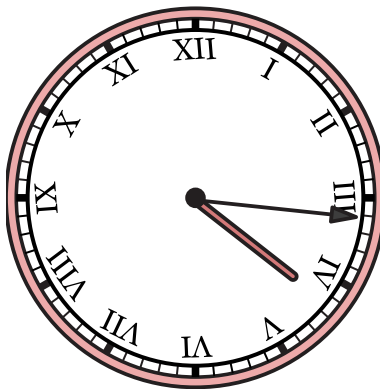
6) 2:09



7) 12:43



8) 4:16



9) 12:50

