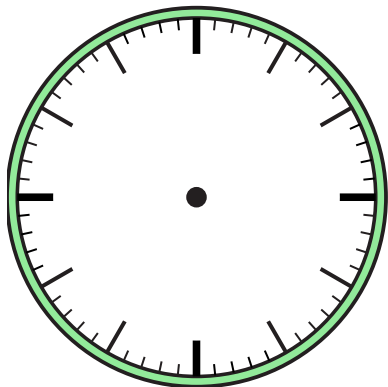


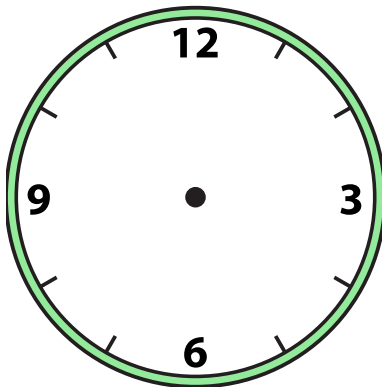


Vẽ kim giờ và kim phút trên đồng hồ để nó đại diện cho thời gian được hiển thị.

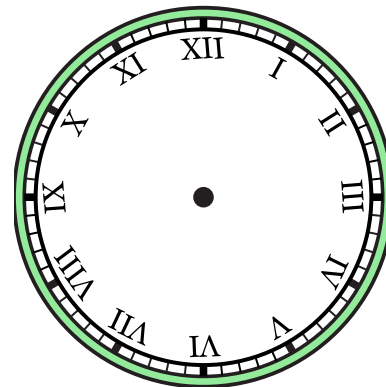
1) 3:30



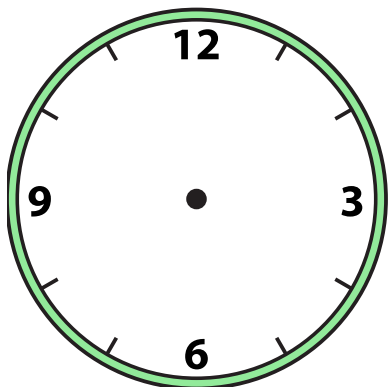
2) 5:30



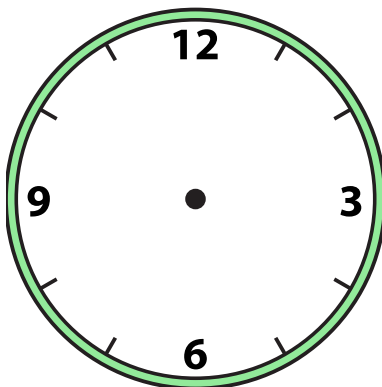
3) 12:00



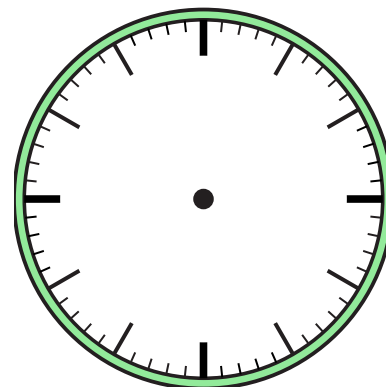
4) 12:30



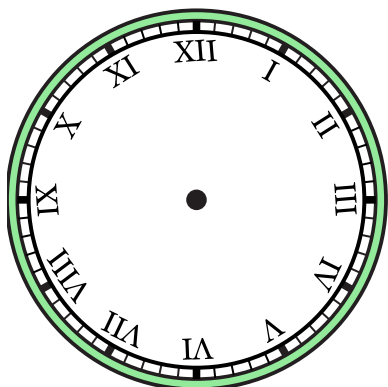
5) 4:30



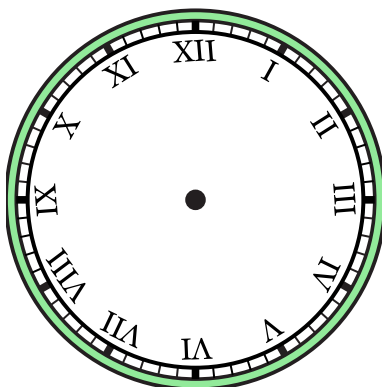
6) 10:00



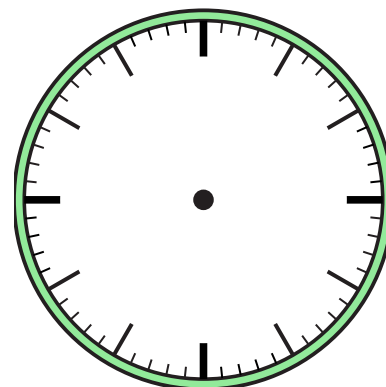
7) 8:30



8) 10:30



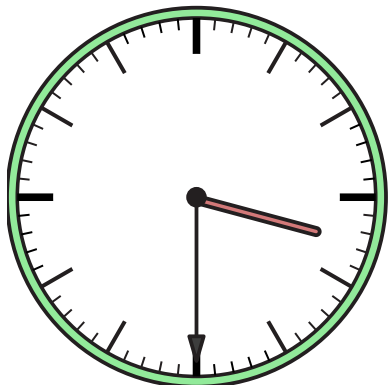
9) 1:00



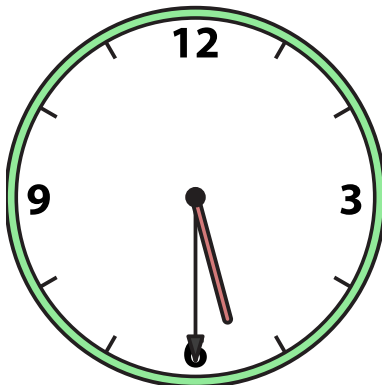


Vẽ kim giờ và kim phút trên đồng hồ để nó đại diện cho thời gian được hiển thị.

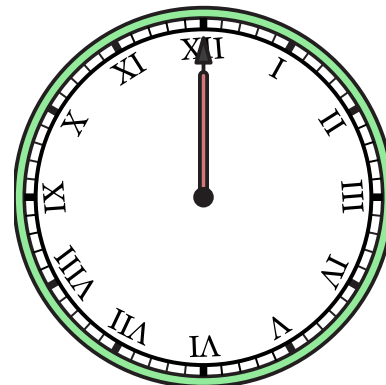
1) 3:30



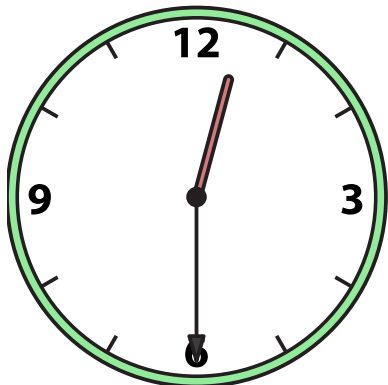
2) 5:30



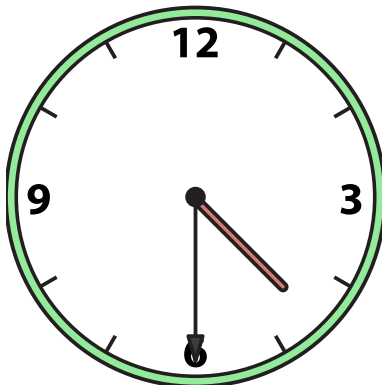
3) 12:00



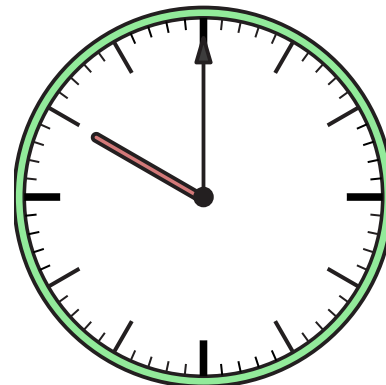
4) 12:30



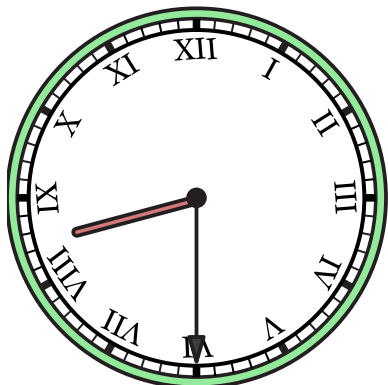
5) 4:30



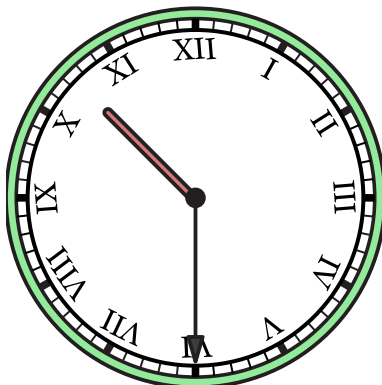
6) 10:00



7) 8:30



8) 10:30



9) 1:00

