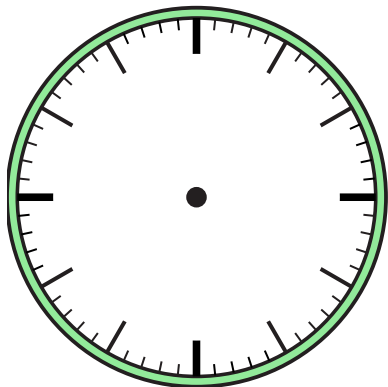


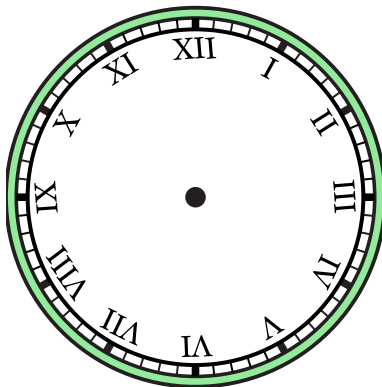


Vẽ kim giờ và kim phút trên đồng hồ để nó đại diện cho thời gian được hiển thị.

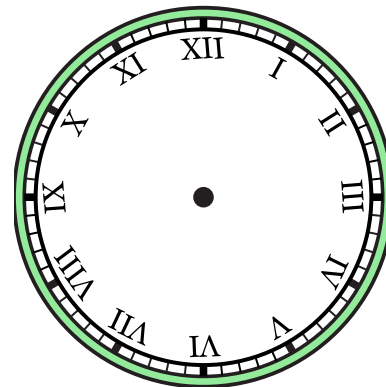
1) 6:00



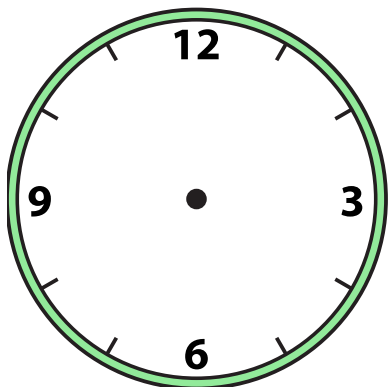
2) 11:30



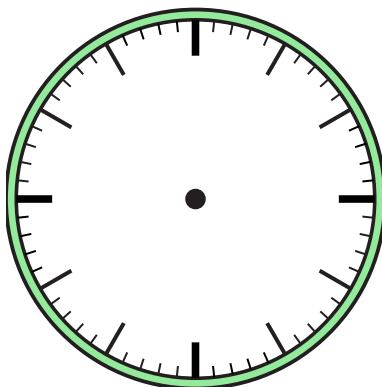
3) 12:00



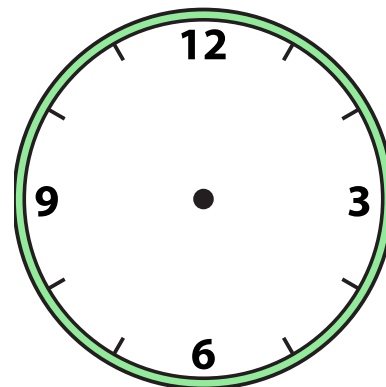
4) 9:00



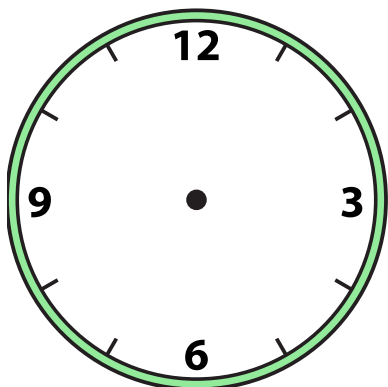
5) 12:00



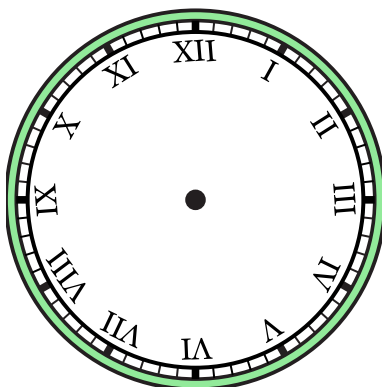
6) 6:30



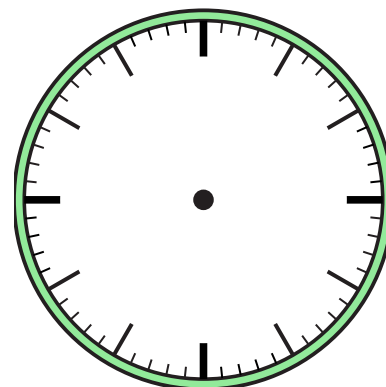
7) 10:30



8) 3:00



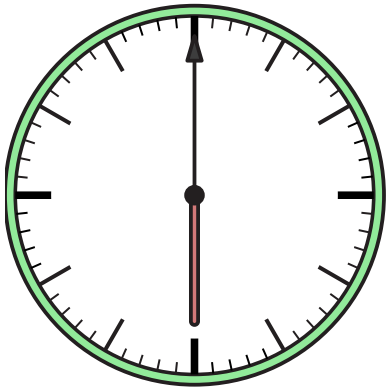
9) 11:00



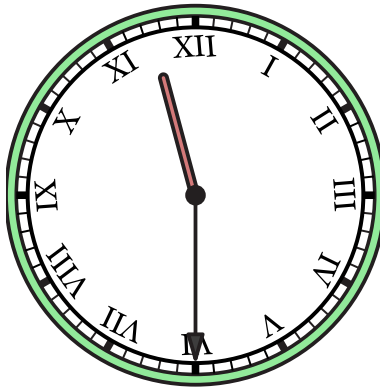


Vẽ kim giờ và kim phút trên đồng hồ để nó đại diện cho thời gian được hiển thị.

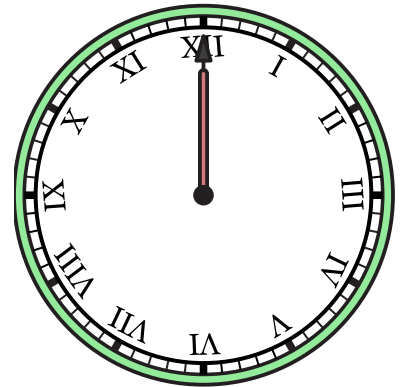
1) 6:00



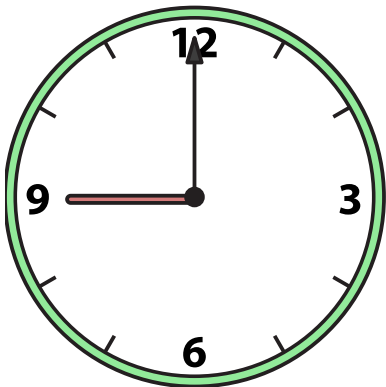
2) 11:30



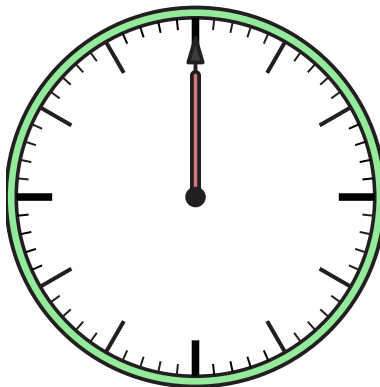
3) 12:00



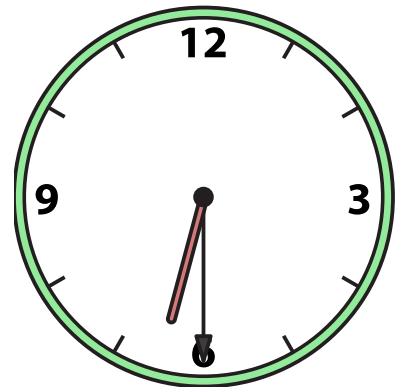
4) 9:00



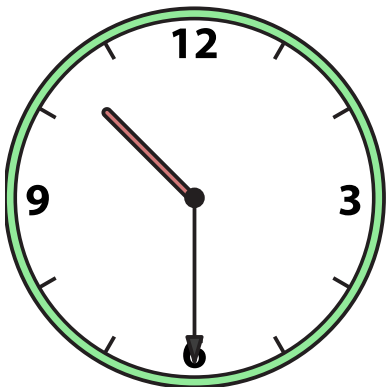
5) 12:00



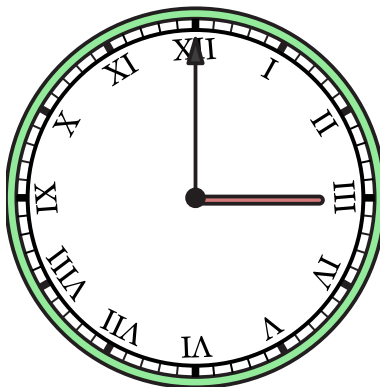
6) 6:30



7) 10:30



8) 3:00



9) 11:00

