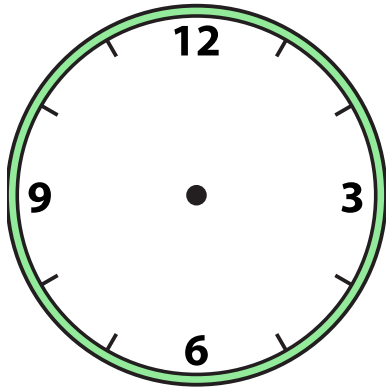


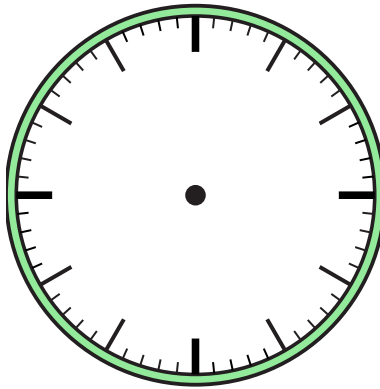


Vẽ kim giờ và kim phút trên đồng hồ để nó đại diện cho thời gian được hiển thị.

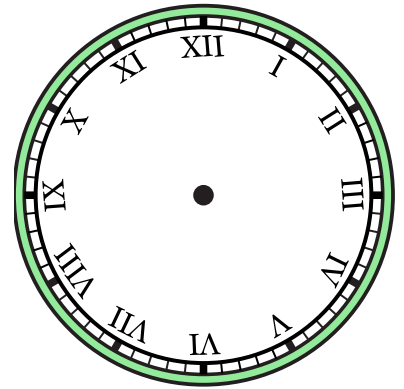
1) 1:30



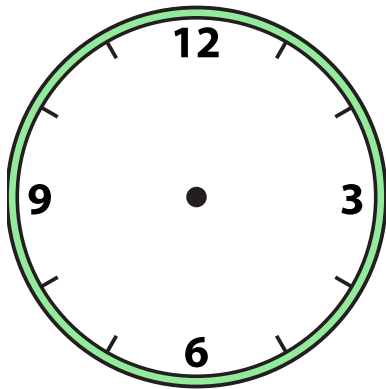
2) 8:00



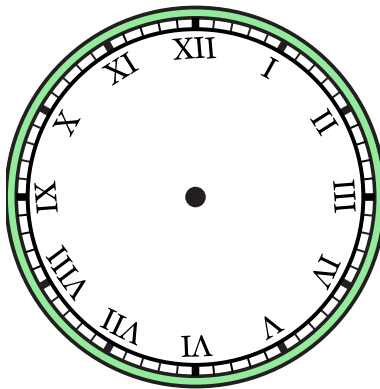
3) 1:00



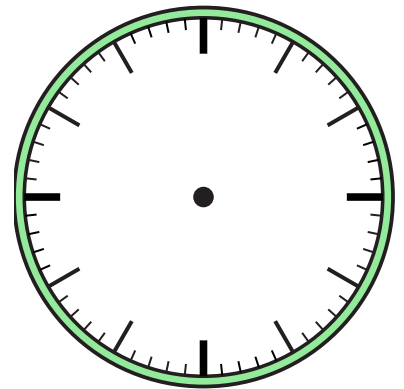
4) 12:30



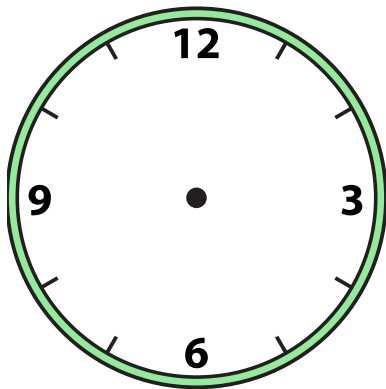
5) 4:00



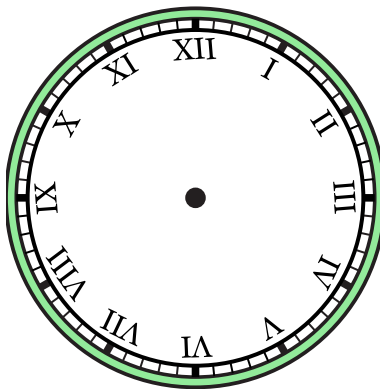
6) 10:00



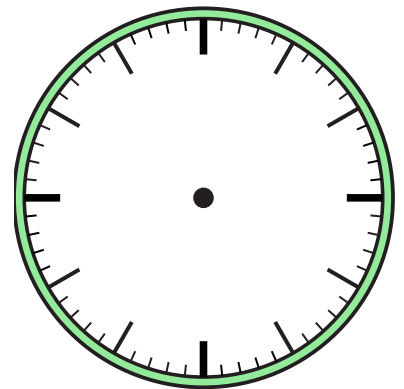
7) 6:30



8) 2:30



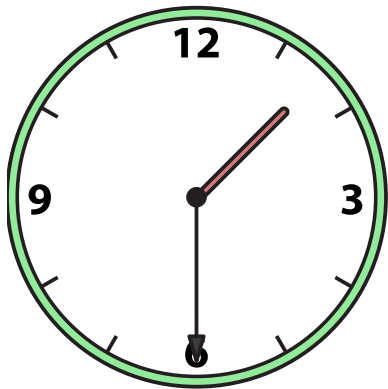
9) 7:30



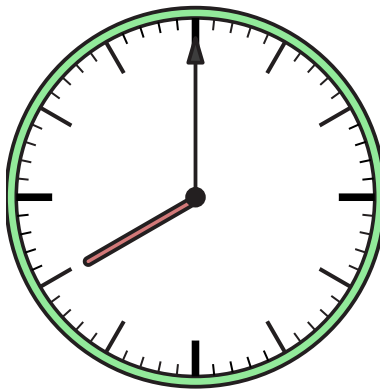


Vẽ kim giờ và kim phút trên đồng hồ để nó đại diện cho thời gian được hiển thị.

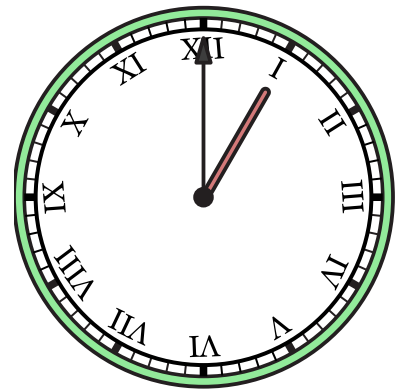
1) 1:30



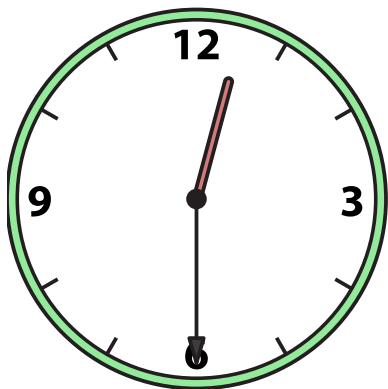
2) 8:00



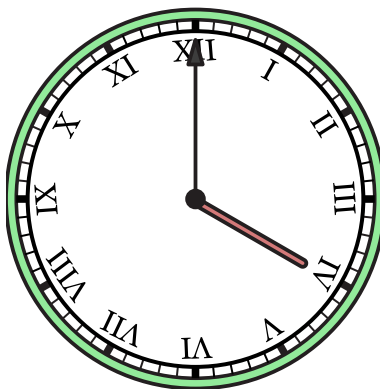
3) 1:00



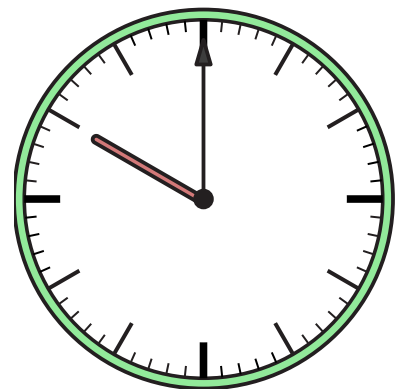
4) 12:30



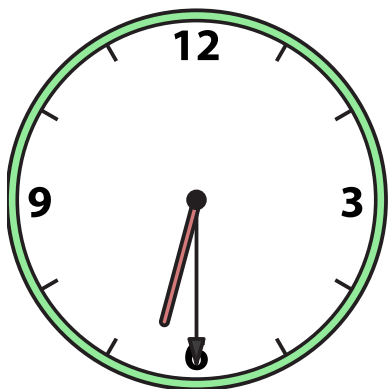
5) 4:00



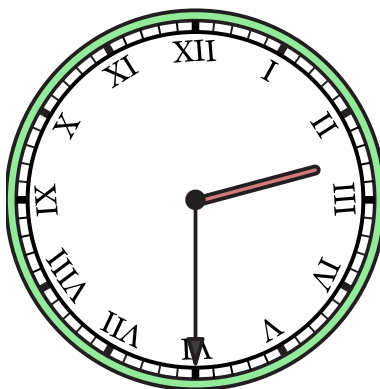
6) 10:00



7) 6:30



8) 2:30



9) 7:30

