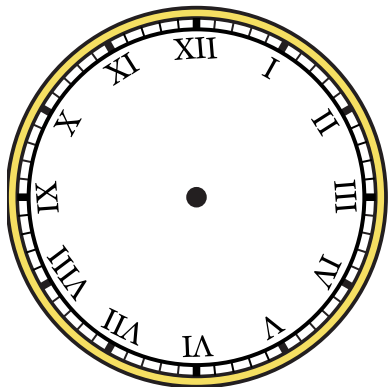


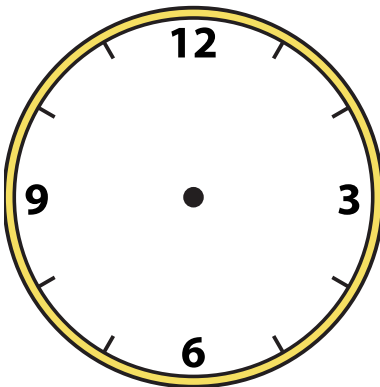


Vẽ kim giờ và kim phút trên đồng hồ để nó đại diện cho thời gian được hiển thị.

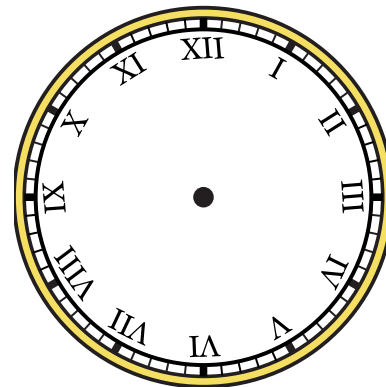
1) 12:00



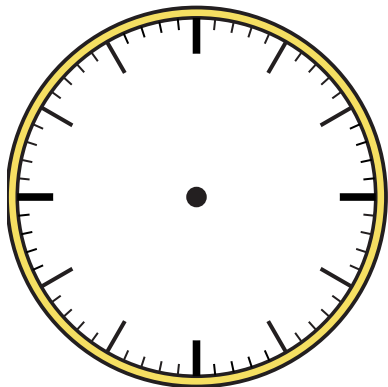
2) 9:15



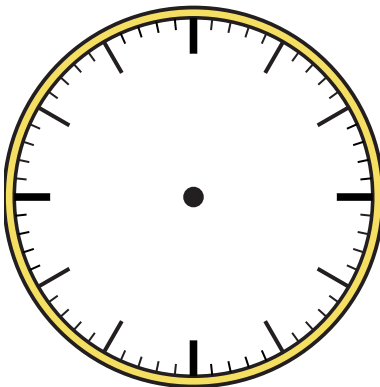
3) 8:00



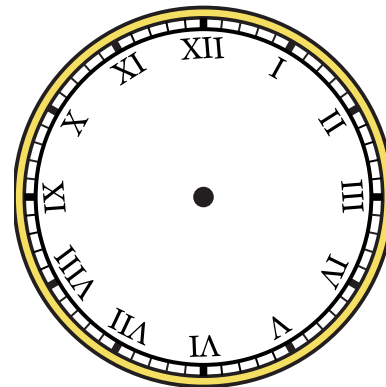
4) 2:00



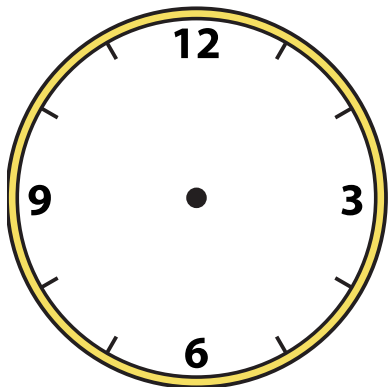
5) 10:15



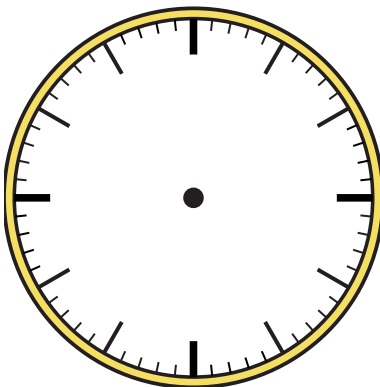
6) 4:30



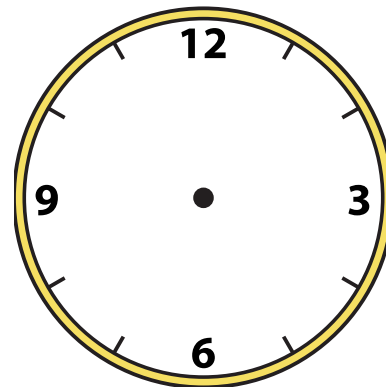
7) 5:30



8) 11:30



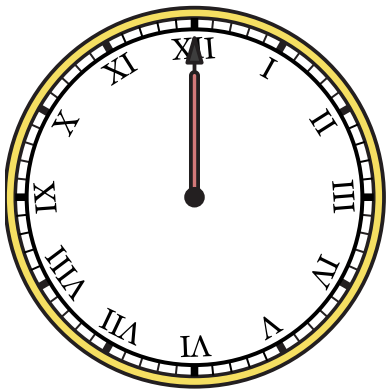
9) 9:45





Vẽ kim giờ và kim phút trên đồng hồ để nó đại diện cho thời gian được hiển thị.

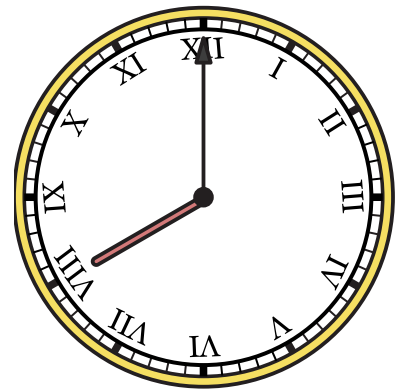
1) 12:00



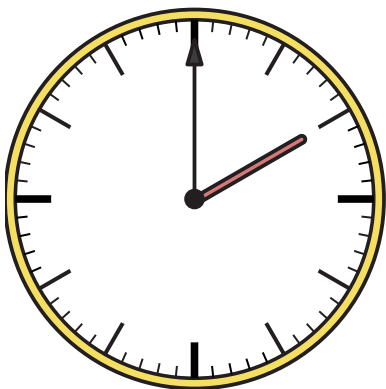
2) 9:15



3) 8:00



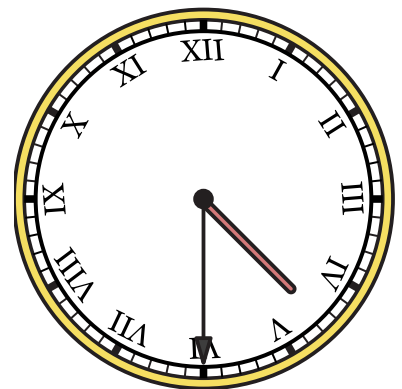
4) 2:00



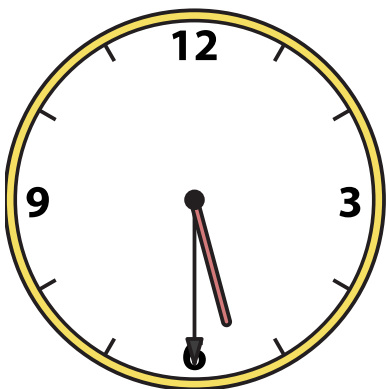
5) 10:15



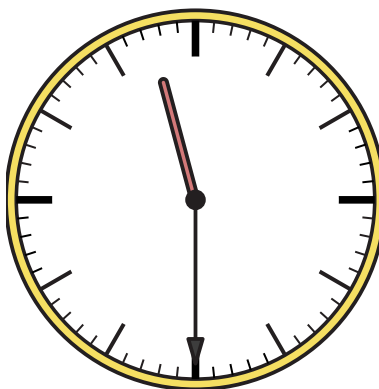
6) 4:30



7) 5:30



8) 11:30



9) 9:45

