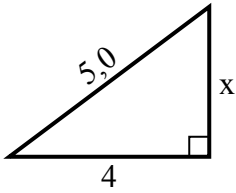


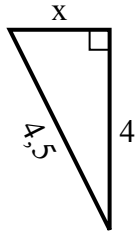


Tim giá trị của x.

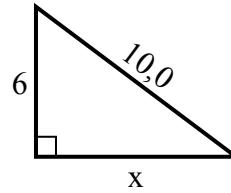
1) chu vi = 12 u



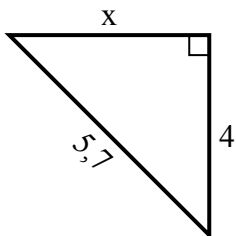
2) chu vi = 10,5 u



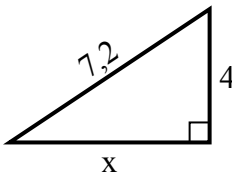
3) chu vi = 24 u



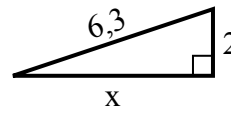
4) chu vi = 13,7 u



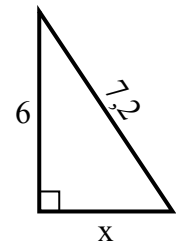
5) chu vi = 17,2 u



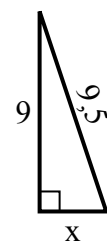
6) chu vi = 14,3 u



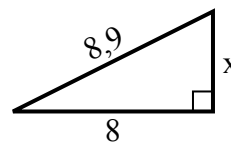
7) chu vi = 17,2 u



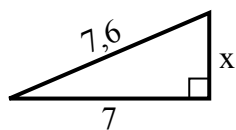
8) chu vi = 21,5 u



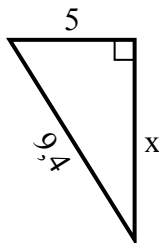
9) chu vi = 20,9 u



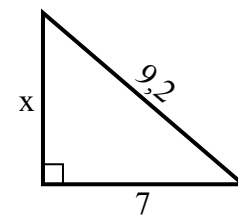
10) chu vi = 17,6 u



11) chu vi = 22,4 u



12) chu vi = 22,2 u



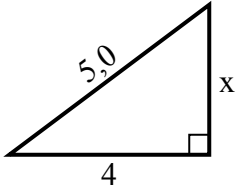
**Câu trả lời**

1. \_\_\_\_\_
2. \_\_\_\_\_
3. \_\_\_\_\_
4. \_\_\_\_\_
5. \_\_\_\_\_
6. \_\_\_\_\_
7. \_\_\_\_\_
8. \_\_\_\_\_
9. \_\_\_\_\_
10. \_\_\_\_\_
11. \_\_\_\_\_
12. \_\_\_\_\_

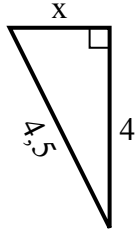


Tim giá trị của x.

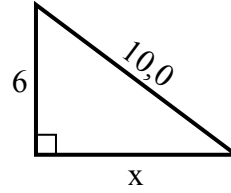
1) chu vi = 12 u



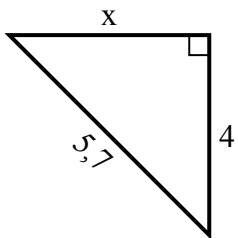
2) chu vi = 10,5 u



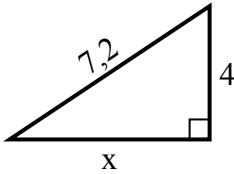
3) chu vi = 24 u



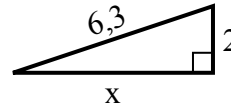
4) chu vi = 13,7 u



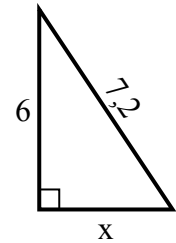
5) chu vi = 17,2 u



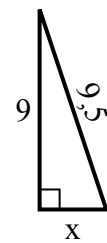
6) chu vi = 14,3 u



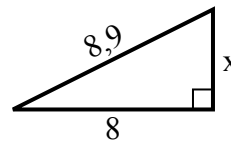
7) chu vi = 17,2 u



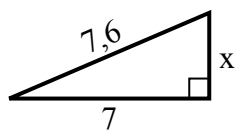
8) chu vi = 21,5 u



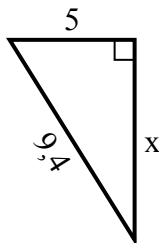
9) chu vi = 20,9 u



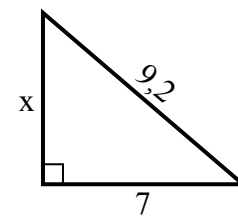
10) chu vi = 17,6 u



11) chu vi = 22,4 u



12) chu vi = 22,2 u



**Câu trả lời**

1. 3

2. 2

3. 8

4. 4

5. 6

6. 6

7. 4

8. 3

9. 4

10. 3

11. 8

12. 6