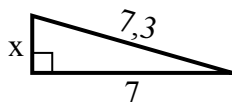


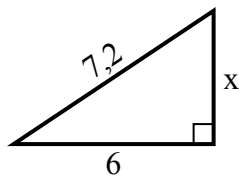


Tim giá trị của x.

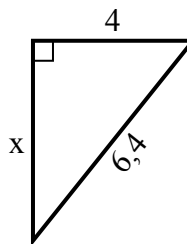
1) chu vi = 16,3 u



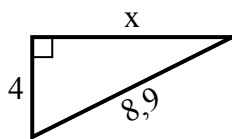
2) chu vi = 17,2 u



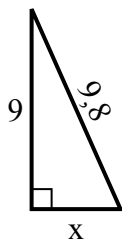
3) chu vi = 15,4 u



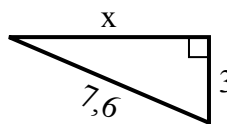
4) chu vi = 20,9 u



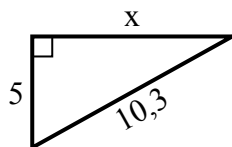
5) chu vi = 22,8 u



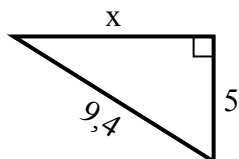
6) chu vi = 17,6 u



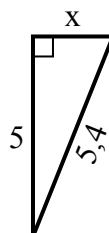
7) chu vi = 24,3 u



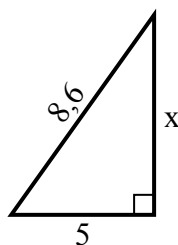
8) chu vi = 22,4 u



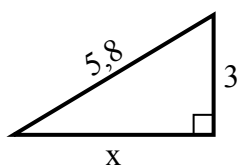
9) chu vi = 12,4 u



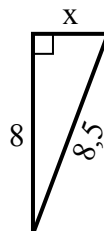
10) chu vi = 20,6 u



11) chu vi = 13,8 u



12) chu vi = 19,5 u



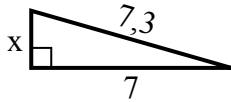
**Câu trả lời**

1. \_\_\_\_\_
2. \_\_\_\_\_
3. \_\_\_\_\_
4. \_\_\_\_\_
5. \_\_\_\_\_
6. \_\_\_\_\_
7. \_\_\_\_\_
8. \_\_\_\_\_
9. \_\_\_\_\_
10. \_\_\_\_\_
11. \_\_\_\_\_
12. \_\_\_\_\_

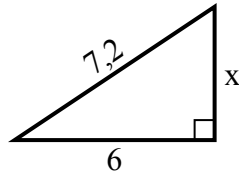


Tim giá trị của x.

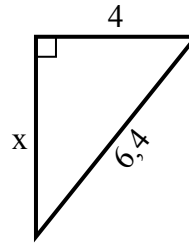
1) chu vi = 16,3 u



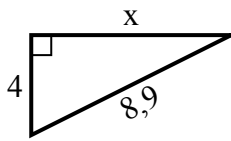
2) chu vi = 17,2 u



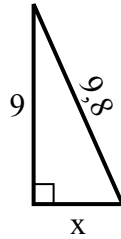
3) chu vi = 15,4 u



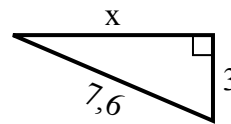
4) chu vi = 20,9 u



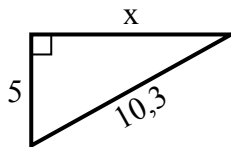
5) chu vi = 22,8 u



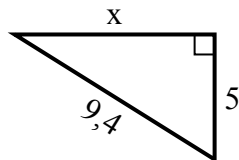
6) chu vi = 17,6 u



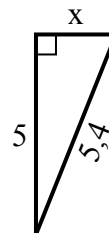
7) chu vi = 24,3 u



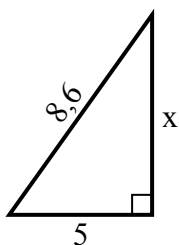
8) chu vi = 22,4 u



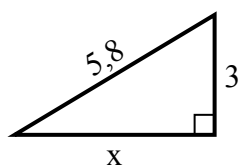
9) chu vi = 12,4 u



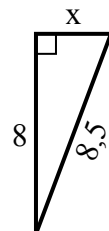
10) chu vi = 20,6 u



11) chu vi = 13,8 u



12) chu vi = 19,5 u



**Câu trả lời**

1. 2

2. 4

3. 5

4. 8

5. 4

6. 7

7. 9

8. 8

9. 2

10. 7

11. 5

12. 3